

# ENDURABOND FLOORSHIELD SL

### DESCRIPTION

**ENDURABOND FLOORSHIELD SL** is a high performance, 100% solids, self-levelling epoxy coating for application to concrete floors.

### RECOMMENDED USE

As an aesthetic epoxy coating where a high degree of resistance to impact, abrasion, and good chemical resistance are required. Provides a seamless, decorative surface. May be applied with a non-skid aggregate finish if required. Typical areas where this coating is used are:

- Engineering workshops
- Plant rooms
- Factories
- Warehouses
- Showrooms
- Stores
- Canteens
- Hospitals
- Laboratories
- Schools
- Industrial kitchens
- Supermarkets

### TECHNICAL INFORMATION

Colour	Grey, Beige, White, Green & Red
Solids (% by Vol.)	100%
Specific Gravity	1.3 (After mixing)
Flexibility	Good
Water Resistance	Excellent
Temperature Resistance	Very Good
Chemical Resistance	Very good
Abrasion Resistance	Excellent

### APPLICATION DATA

**Application methods:** Roller and brush for a thin film paint type finish, or rubber or steel notched trowel and/or roller followed by spiked roller to assist de-aeration when used as a thick film self-levelling topping.

#### Mixing Ratio:

Supplied as pre-weighed 15 litre kits  
Mix ratio: 2.5 : 1 parts resin : hardener by volume.

**Mixing:** Thoroughly power mix for minimum 3 minutes, scraping the sides and bottom of the mixing container regularly. Avoid air entrapment. Box mix for optimum mixing. Thin 5-15% with Thinner P2 to aid de-aeration.

**Pot Life:** 30 minutes at 25°C. Pour out mixed material immediately onto the floor after mixing. Do not let mixed material stand in the mixing pail.

**Clean-up Solvent:** Thinner P2

### APPLICATION

The temperature of the substrate should be minimum 10°C and minimum 3°C above the dew point of the air, temperature and relative humidity measured in the vicinity of the substrate.

### DRYING TIME

Drying times are generally related to air circulation, temperature, film thickness and number of coats, and will be affected correspondingly. The figures given in the table are typical with:

- \* Good ventilation
- \* Recommended film thickness
- \* One coat on primed substrate

Temperature	Surface Dry	Hard Dry (foot traffic)	Full Cure (vehicle traffic)
10°C	36 h	72 h	12-14 days
25°C	16 h	24 h	7 days
35°C	12 h	18 h	5 days

If recoating is required, to ensure maximum intercoat adhesion, the subsequent coat must be applied before the preceding coat is cured. If this time is exceeded it may be necessary to abrade and solvent wipe the surface. Consult Polymer Group Ltd for further details.

The above data must be considered as guidelines only. Actual drying time can only be decided at site, depending on numbers of coats, temperature etc.

### TYPICAL RECOMMENDED SYSTEM

**Endurabond 300ECO Primer** (water thinnable sealer primer):

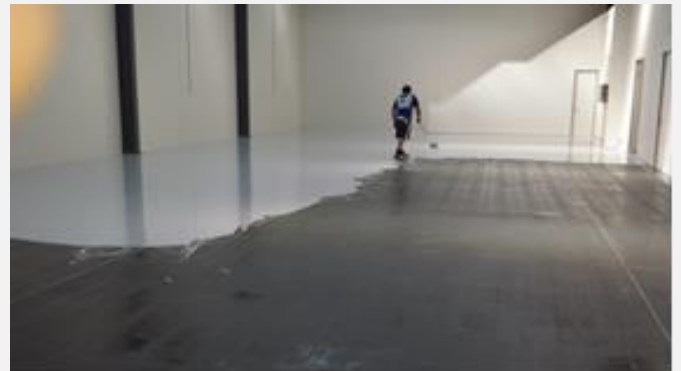
Mix **Endurabond 300ECO Primer**. Add up to 10% clean water to assist rolling and flow. Roll out at 6-8m<sup>2</sup>/litre depending on concrete porosity. Allow primer to become tack free before application of the Floorshield SL Topcoat. If concrete floor is porous apply a second coat of Endurabond 300ECO to seal any bug holes.

#### FLOORSHIELD SL Topcoat:

1) **High build paint finish:** Semi-gloss finish. 300 to 500 microns DFT (0.3-0.5 mm). Squeegee and back roll.

2) **Smooth self-level floor finish:** High gloss finish. 2mm to 3 mm DFT. Apply in two coats ie 0.8 -1.5L/m<sup>2</sup> per coat. For minor pin holes, while wearing spike shoes lightly dust with J61W sand to pop any air bubbles. Alternatively, when surface can take pedestrian traffic fill any pin holes with a spatula applied epoxy filler.

Special application methods are possible to achieve enhanced non-skid finish. Consult Polymer Group Ltd for specific advice.



**POLYMER GROUP LTD**

PO Box 204 106 Highbrook, Auckland 2161, New Zealand Telephone: 64-9-274 1400 Fax: 64-9-274 1405 Email: sales@polymer.co.nz www.polymer.co.nz

**Coverage Rates:**

1) As a roll-on high build coating: 0.3 to 0.5 litres per sqm for 0.3 to 0.5mm DFT - 30 to 50 m<sup>2</sup> per 15L kit.

2) As a self-levelling topping: 0.8 -1.5L per m<sup>2</sup> for 0.8 to 1.5mm DFT - 10 to 18.7 m<sup>2</sup> per 15L kit.

**STORAGE**

The product must be stored in accordance with national regulations. Preferred storage conditions are to keep the containers in a dry space provided with adequate ventilation. The containers should be sealed tightly.

**HANDLING**

Handle with care. Stir Part A well before use if using part quantities.

**HEALTH AND SAFETY**

Please observe the precautionary notices displayed on the container. Apply in well-ventilated conditions. Use an approved canister mask when any solvents are involved. Avoid skin contact. Spillage on the skin should immediately be removed with suitable cleaner, soap and water. Eyes should be well flushed with water and medical attention sought immediately.

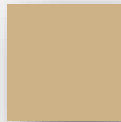
For detailed information on the health and safety hazards and precautions for use of this product, please refer to the Material Safety Data Sheet.



Silver Grey  
RAL 7001



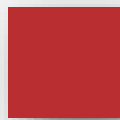
Anthracite Grey  
RAL 7016



Beige  
RAL 1001



Green leaves  
RAL 6002



Flaming Red  
RAL 3000



Traffic White  
RAL 9016

May 2024

To the best of our knowledge the technical data contained herein are true and accurate at the date of issuance and are subject to change without prior notice. User must contact Polymer Group Ltd to verify correctness before specifying or ordering. No guarantee of accuracy is given or implied. We guarantee our products to conform to Polymer Group Ltd quality control. We assume no responsibility for coverage, performance or injuries resulting from use. Liability, if any, is limited to replacement of products. Prices and cost data if shown, are subject to change without prior notice. NO OTHER WARRANTY OR GUARANTEE OF ANY KIND IS MADE BY THE SELLER, EXPRESS OR IMPLIED, STATUTORY, BY OPERATION OR LAW, OR OTHERWISE, INCLUDING MERCHANTABILITY AND FITNESS FOR A PARTICULAR PURPOSE.