

ENDURAGRIP C

DESCRIPTION

Enduragrip C is a rapid cure, high build epoxy resin designed to provide a heavy duty trafficable protective and abrasion resistant coating for concrete surfaces. Enduragrip is also suited for use with aggregate dressings to provide a durable, industrial or decorative, trafficable surface encompassing excellent skid resistance in both wet and dry weather.



SURFACING TYPE

Solvent free epoxy resin surfacing system.

RESIN COLOURS

Translucent amber/clear, red and green.

RESIN COMPONENT PROPERTIES

	Part A	Part B
Appearance	Clear Liquid	Light Amber Liquid
Viscosity-RVT at 25°C	750 cps	1350 cps
Specific Gravity at 25°C	1.00 – 1.10	1.05 – 1.07

SYSTEM PROPERTIES

Resin Solids Content	100%	
Theoretical Coverage	Resin	1.0 Kg/m ²
	Aggregate (0.8 - 1.5mm)	6-7 kg/m ²
Resin Mixing Ratio	5:1 by weight (resin : hardener)	
Pot Life at 25°C	Typically 10 to 15 minutes	
Initial Gel Time	30 minutes	
Setting Time at 25°C	Initial set:	Full cure:
	4 hours	24 hours

RESIN FILM PROPERTIES

Shore Hardness	> 75° D
Tensile Strength	≥ 12 N/mm ²
Density	1.1 g/ml
Tensile Adhesion	Concrete - ≥ 3.0 N/mm ²

SURFACE PREPARATION

All surfaces should be prepared in accordance with the Surface Preparation Data sheet prior to application of this product.

APPLICATION PROCEDURE

Material should be proportioned in the correct ratios in volumes that are suitable for the application at hand. The hardener (Pack B) should be added to the resin base (Pack A) using a slow speed, high torque drill with mixing paddle for 120-180 seconds to obtain a homogenous mix. Once mixed, the resin should be immediately applied and spread evenly using a roller, serrated squeegee or notched trowel.

The resin should be allowed to level and then should be dressed to excess using the chosen aggregate. The wet resin should receive the aggregate dressing within 15-10 minutes of application and the aggregate should be applied vertically, allowing the dressing to “fall” onto the resin to avoid any potential “rippling” in the finished surface.

Steep gradients may require the addition of a thixotrope or silica filler and the resin should be left open as long as possible prior to casting of the chosen aggregate dressing. Upon cure the excess aggregate should be removed and the surface may then be sealed if required – please consult your PGL technical representative.

ADDITIONAL INFORMATION

Enduragrip C is suitable for blending with aggregate fillers to form a repair paste or mortar for the rectification of minor concrete imperfections prior to resin surfacing.

PACKAGING

15 kg kits plus aggregate.

COVERAGE RATE

13.6m² at 1mm thickness per kit.

COLOUR PACK

Colours available Concrete Grey (7035), Medium Grey (7042), Dark Grey (7015), Beige (1001), White, Black, Yellow, Green, Red & Blue.

Add 500mLs to 800mLs (4% - 6% by volume) Pigment Paste DINP per kit to hide any patchiness showing through from the substrate.

STORAGE

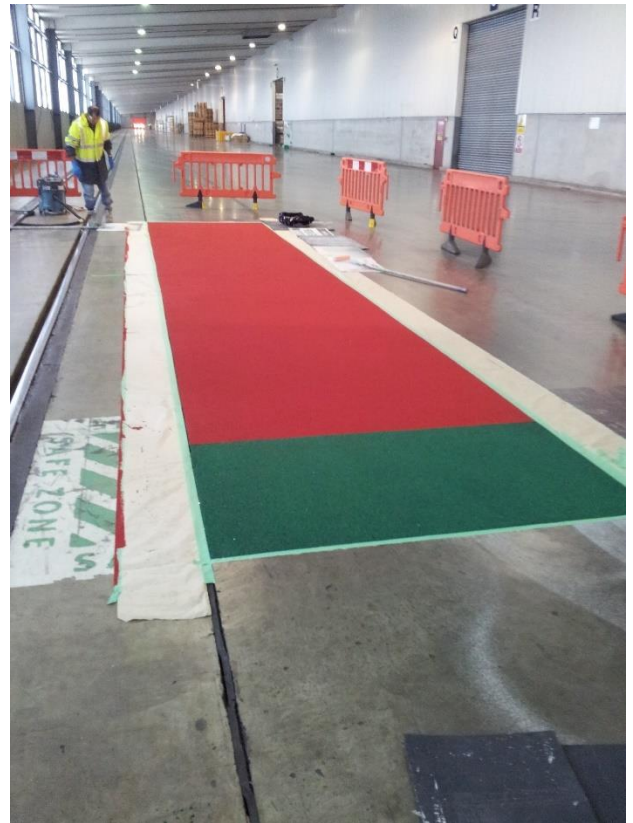
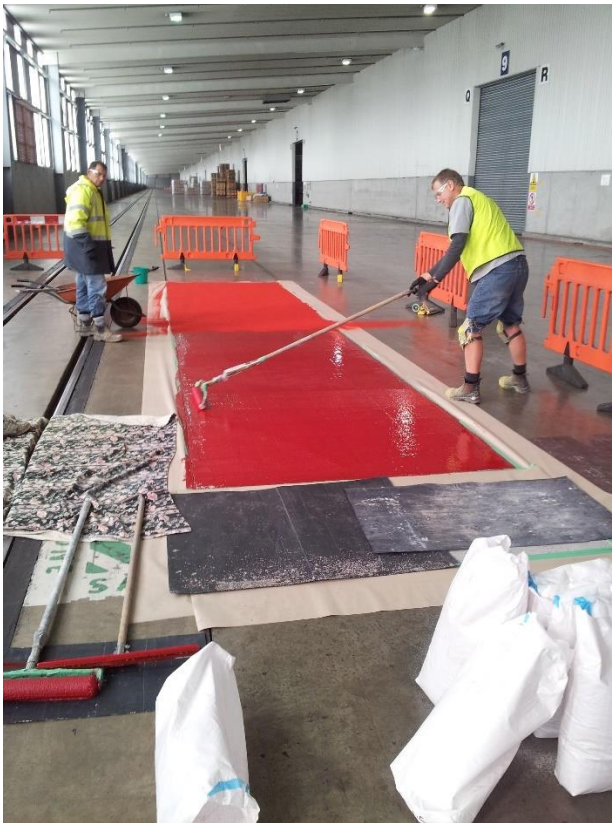
Store in sealed containers at 5-30°C

SHELF LIFE

24 months minimum

HEALTH AND SAFETY

Before using this product refer to the Material Safety Data sheets. Wear personal protective equipment.



Fonterra Te Rapa Loading Bay. Fork hoist loading / unloading of rail wagons – Bay Protective Coatings

Rev 4 Nov2022

To the best of our knowledge the technical data contained herein are true and accurate at the date of issuance and are subject to change without prior notice. User must contact Polymer Group Ltd to verify correctness before specifying or ordering. No guarantee of accuracy is given or implied. We guarantee our products to conform to Polymer Group Ltd quality control. We assume no responsibility for coverage, performance or injuries resulting from use. Liability, if any, is limited to replacement of products. Prices and cost data if shown, are subject to change without prior notice. NO OTHER WARRANTY OR GUARANTEE OF ANY KIND IS MADE BY THE SELLER, EXPRESS OR IMPLIED, STATUTORY, BY OPERATION OR LAW, OR OTHERWISE, INCLUDING MERCHANTABILITY AND FITNESS FOR A PARTICULAR PURPOSE.