

CASE HISTORY

MARCH 2017



POLYMER GROUP LTD

STIRLING LLOYD
ELIMINATOR

BEACH ROAD MOTORWAY OVER BRIDGE

PROJECT: Waterproof Concrete Deck
Owner: NZ Transport Agency
Principal Contractor: Fulton Hogan
(Auckland Motorway Alliance)
Project Specification: No. 2 Primer
Two Coat Eliminator
Bond Coat No. 3
Contract Applicator: Polymer Group Ltd, Contracting Division.
Completion Date: March 2017

The Stirling Lloyd Eliminator membrane system was chosen to waterproof and protect the concrete deck of the Beach Road Motorway Over Bridge

The motorway over bridge is a 50 year old concrete structure which has some surface cracking that needed to be waterproofed, going forward.

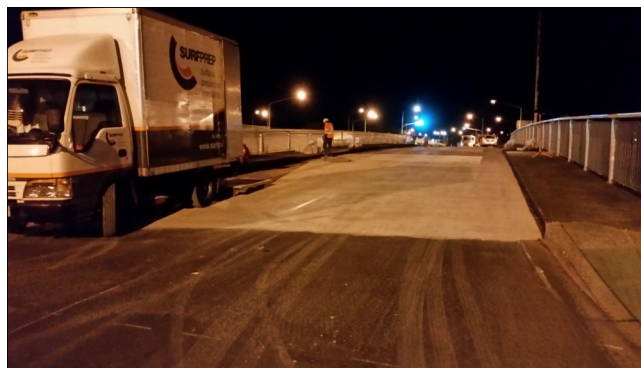


Photo 1

Milling of the existing SMA down to the concrete deck.

Photo 2

The concrete deck was then fine-milled using a bobcat, then diamond ground and captive shot blasted to remove the bitumen remnants.

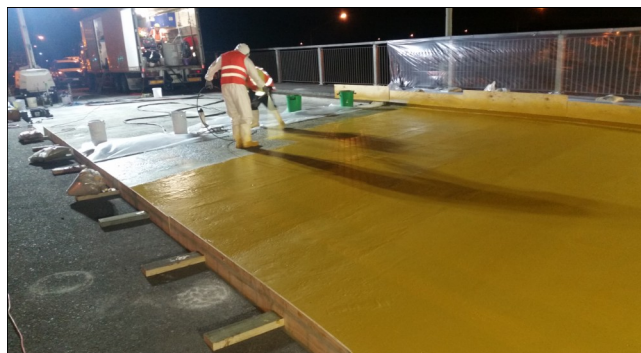


Photo 3

The primer application and first layer of Eliminator (yellow) spray-applied.

Photo 4

After a one hour set time, the second coat of Eliminator (white) is spray-applied.



 **StirlingLloyd**
Innovation Driven, Service Led, Solutions Based.



SOLUTIONS FOR EXTREME ENVIRONMENTS

POLYMER GROUP LTD

Head Office & Manufacturing Facility
62 Stonedon Drive
East Tamaki
AUCKLAND 2013

Phone: 09 274 1400
Fax: 09 274 1405

E-mail: sales@polymer.co.nz

Contacts: Phil back
Product Manager—Polyurethanes
back@polymer.co.nz
Zander Olivier
Technical Sales Representative
olivier@polymer.co.nz
Lorne Crowley
Technical Director
crowley@polymer.co.nz
Ron Avery
General Manager Contracting
avery@polymer.co.nz

**Chemically Engineered
Solutions for Extreme
Environments**

Visit our new website
www.polymer.co.nz

Polymer Group Ltd is an applied technology company comprising a team of industrial chemists, engineers and qualified coatings inspectors which has served New Zealand industry for over 25 years.

Property Asset Protection is the company's major focus, providing proven, durable solutions for the **protection of structural steel, concrete and timber** structures.

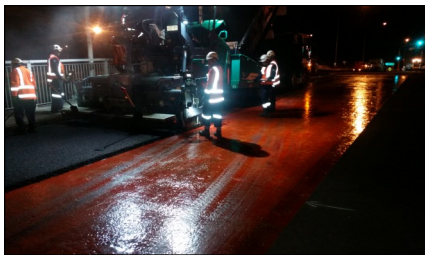
Wear resistant, Anti-corrosive Protection Systems are engineered to provide optimum performance and extended maintenance intervals.

Surface coating Technology Advances offer multiple choices to the asset manager and civil engineer who is seeking long term solutions and minimum downtime, but not always able to provide an optimum application time frame.

Maintenance Assessments and specification Options give the client the opportunity to inspect and discuss the asset with experienced personnel, taking into consideration the exposure environment, past performance of any existing protection systems, available downtime and other constraining influences.

Sole Responsibility Material Supply and Application Contracts provide the client with further reassurance that their protection/maintenance systems are supplied and installed by a Quality Assured, company.

Solutions for your Extreme Environment



New SMA is applied directly onto the bond-coat.

HUNTSMAN

Enriching lives through innovation



DUR-A-FLEX

Endurathane®

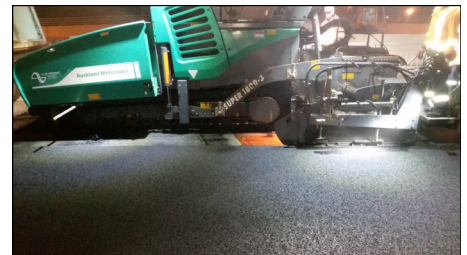
Enduracoat®

Endurabond®

Enduragrip®

Enduracryl®

Castorthane®



The very last section of the new SMA being applied to the Eliminator waterproofing system on the bridge.

- Dur-A-Flex Floor Coatings and Toppings
- Jotun® Fireproof Coatings
- Car Park Deck Waterproofing Membranes
- Endurathane Spray Applied Polyurea Membranes for secondary containment and tank linings.

- Jotun® Marine & Protective Coatings
- Rhino Linings® Polyurethane Coatings
- Enduracoat® Linings for sewage & wastewater
- Stirling Lloyd® Bridge Deck Waterproofing Systems